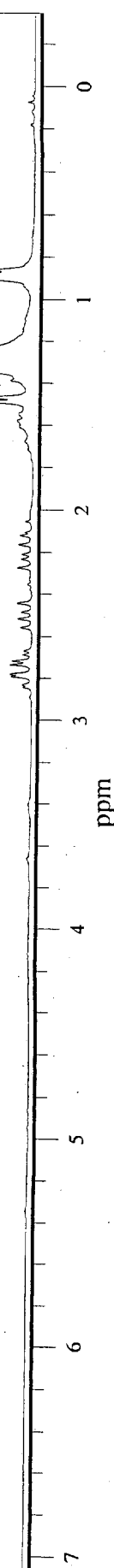
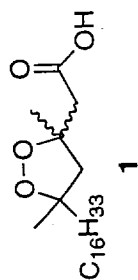
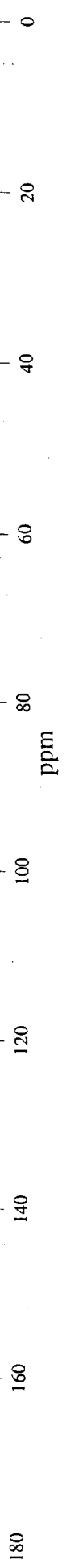


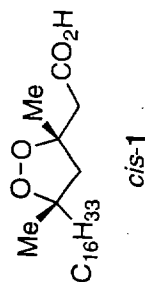
#	height (uncorr)	freq (Hz)	freq (ppm)
1	0.72	853.47	2.840
2	0.80	850.37	2.830
3	1.79	838.68	2.791
4	1.86	835.34	2.780
5	1.85	821.75	2.734
6	1.72	816.51	2.717
7	0.76	806.97	2.685
8	0.73	801.49	2.667
9	1.00	767.87	2.555
10	1.19	755.23	2.513
11	0.91	745.69	2.481
12	1.29	733.30	2.440
13	1.29	682.27	2.270
14	0.94	669.63	2.228
15	0.89	662.96	2.206
16	1.20	649.84	2.162
17	1.02	637.45	2.121
18	0.71	503.45	1.675
19	1.17	482.46	1.605
20	1.11	480.08	1.597
21	1.14	477.93	1.590
22	1.39	473.88	1.577
23	1.23	464.10	1.544
24	1.22	463.39	1.542
25	0.84	458.38	1.525
26	0.88	457.19	1.521
27	0.86	455.52	1.516
28	7.50	447.41	1.489
29	7.57	441.21	1.468
30	1.88	416.18	1.385
31	1.79	411.65	1.370
32	9.85	402.83	1.340
33	18.79	389.00	1.294
34	100.00	378.75	1.260
35	1.00	349.18	1.162
36	0.94	343.46	1.143
37	0.94	342.98	1.141
38	0.94	342.50	1.140
39	0.95	341.55	1.137
40	0.86	338.45	1.126
41	0.82	336.78	1.121
42	0.80	336.07	1.118
43	0.80	334.87	1.114
44	0.74	332.01	1.105
45	0.82	327.24	1.089
46	0.97	281.46	0.937
47	4.08	272.17	0.906
48	9.26	266.20	0.886
49	4.33	259.05	0.862



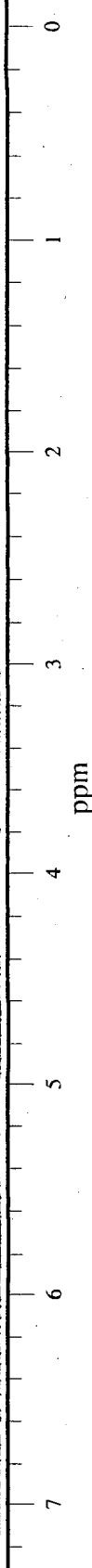


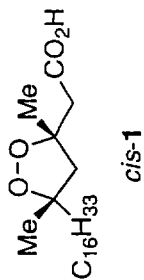
#	height (uncorr)	freq (Hz)	freq (ppm)
1	5.21	13296.93	175.965
2	7.56	6557.36	86.777
3	6.67	6541.96	86.573
4	6.97	6328.60	83.749
5	5.61	6317.60	83.604
6	66.46	5853.48	77.462
7	67.70	5821.59	77.040
8	66.98	5789.70	76.618
9	8.74	4194.99	55.514
10	9.28	4185.09	55.383
11	7.55	3331.64	44.089
12	6.82	3318.45	43.915
13	9.55	2998.40	39.679
14	8.86	2929.12	38.762
15	26.00	2411.11	31.907
16	12.80	2270.34	30.045
17	10.55	2267.04	30.001
18	100.00	2241.74	29.666
19	81.02	2239.54	29.637
20	34.45	2234.04	29.564
21	14.09	2229.64	29.506
22	4.86	2221.95	29.404
23	23.38	2217.55	29.346
24	8.44	1877.71	24.849
25	9.09	1865.61	24.689
26	9.22	1851.31	24.499
27	9.35	1800.72	23.830
28	8.58	1791.92	23.713
29	9.20	1750.13	23.160
30	19.32	1712.74	22.666
31	18.74	1066.06	14.108



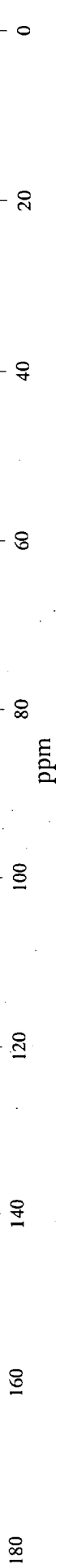


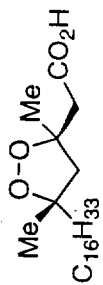
#	height (uncorr)	freq (Hz)	freq (ppm)	#	height (uncorr)	freq (Hz)	freq (ppm)
1	11.62	2184.16	7.268	1	2.30	479.36	1.595
2	1.04	847.27	2.819	2	2.45	477.46	1.589
3	3.79	832.48	2.770	3	2.44	476.98	1.587
4	1.17	828.19	2.756	4	2.51	476.50	1.586
5	3.77	824.14	2.743	5	2.55	475.55	1.582
6	1.06	809.35	2.693	6	2.56	475.07	1.581
7	2.36	763.81	2.542	7	2.54	474.60	1.579
8	2.82	751.18	2.500	8	15.70	448.84	1.494
9	2.99	653.90	2.176	9	2.35	415.70	1.383
10	2.42	641.50	2.135	10	3.14	412.13	1.371
				11	18.15	405.21	1.348
				12	100.00	378.27	1.259
				13	4.51	271.69	0.904
				14	4.05	269.07	0.895
				15	8.95	265.73	0.884
				16	2.84	261.20	0.869
				17	4.46	258.58	0.860



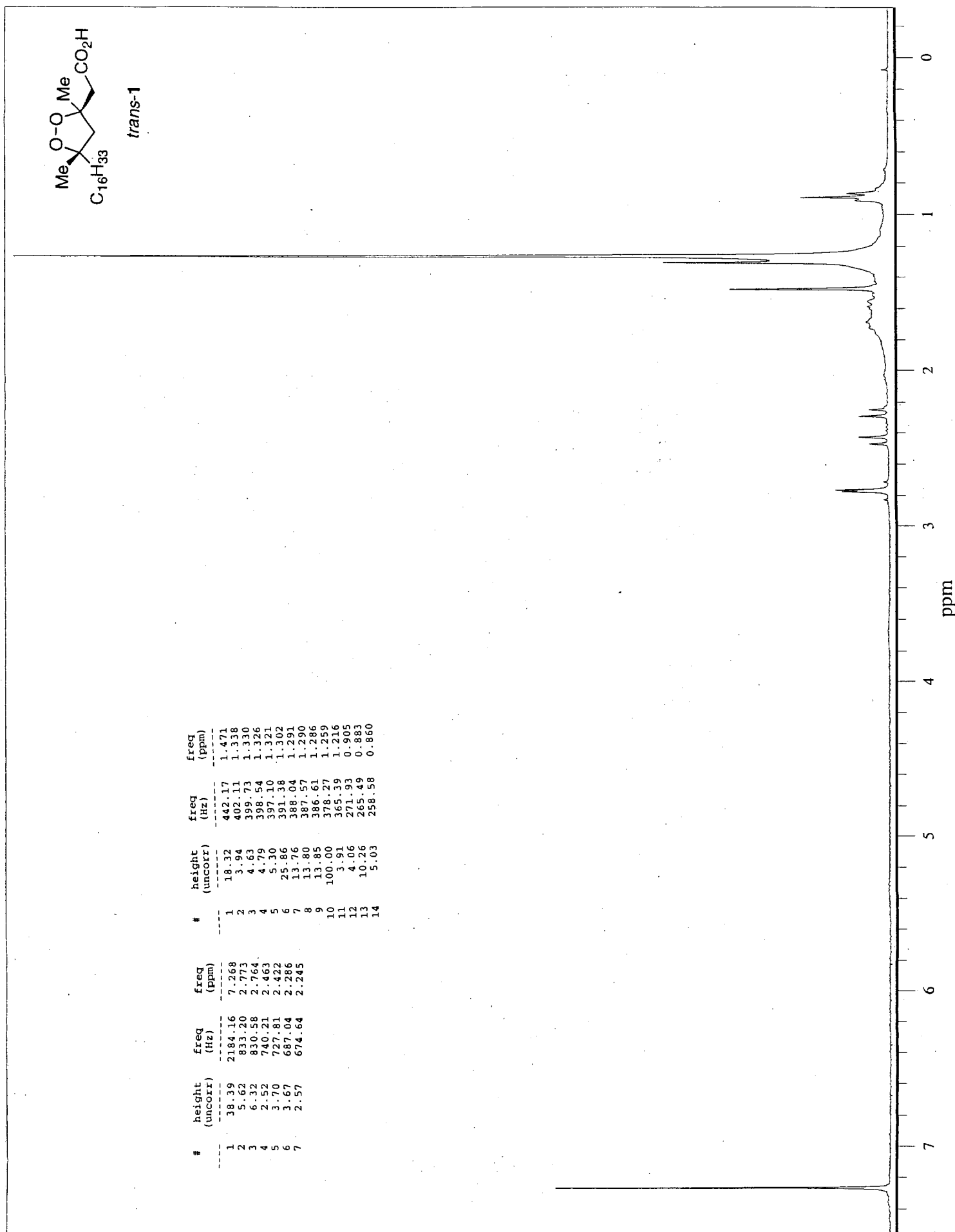


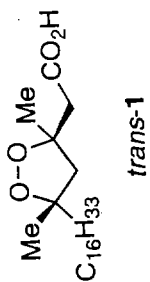
#	height (uncorr)	freq (Hz)	freq (ppm)
1	3.08	13177.05	174.378
2	6.39	6568.35	86.922
3	5.32	6326.40	83.720
4	97.19	5853.48	77.462
5	4.26	5836.99	77.244
6	100.00	5821.59	77.040
7	97.36	5789.70	76.618
8	7.03	4193.89	55.500
9	6.56	3319.55	43.929
10	7.08	2930.22	38.777
11	9.25	2414.41	31.951
12	8.37	2273.64	30.088
13	38.00	2246.14	29.724
14	24.92	2242.84	29.681
15	9.39	2237.34	29.608
16	9.09	2232.94	29.550
17	9.58	2220.85	29.390
18	7.02	1883.21	24.921
19	7.96	1873.31	24.790
20	8.61	1790.82	23.699
21	5.71	1717.14	22.724
22	6.47	1069.36	14.151



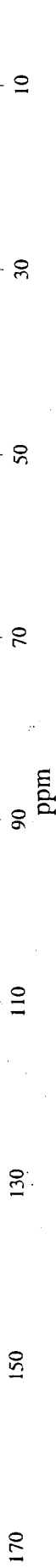


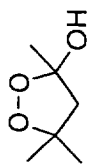
#	height (uncorr)	freq (Hz)	freq (ppm)	#	height (uncorr)	freq (Hz)	freq (ppm)
1	38.39	2184.16	7.268	1	18.32	442.17	1.471
2	5.62	833.20	2.773	2	3.94	402.11	1.338
3	6.32	830.58	2.764	3	4.63	399.73	1.330
4	2.52	740.21	2.463	4	4.79	398.54	1.326
5	3.70	727.81	2.422	5	5.30	397.10	1.321
6	3.67	687.04	2.286	6	25.86	391.38	1.302
7	2.57	674.64	2.245	7	13.76	388.04	1.291
				8	13.80	387.57	1.290
				9	13.85	386.61	1.286
				10	100.00	378.27	1.259
				11	3.91	365.39	1.216
				12	4.06	271.93	0.905
				13	10.26	265.49	0.883
				14	5.03	258.58	0.860





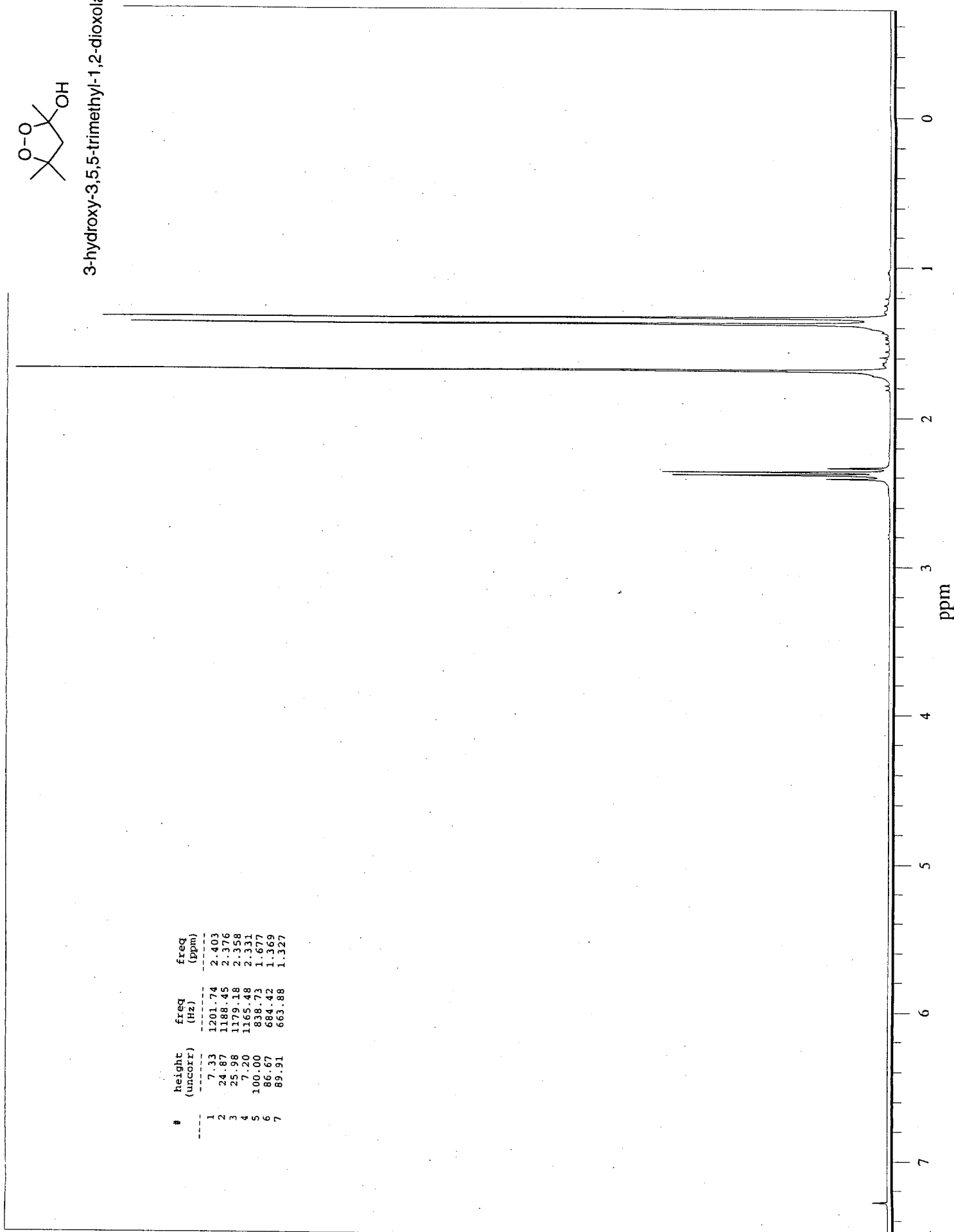
#	height (uncorr)	freq (Hz)	freq (ppm)	#	height (uncorr)	freq (Hz)	freq (ppm)
1	3.52	13179.25	174.408	1	8.01	6550.76	86.689
				2	6.48	6337.40	83.866
				3	99.06	5853.48	77.462
				4	5.59	5836.99	77.244
				5	100.00	5821.59	77.040
				6	97.20	5789.70	76.618
				7	9.79	4203.79	55.631
				8	9.66	3306.35	43.755
				9	9.22	3003.90	39.752
				10	11.58	2414.41	31.951
				11	11.52	2270.34	30.045
				12	49.18	2246.14	29.724
				13	39.01	2242.84	29.681
				14	19.75	2237.34	29.608
				15	12.63	2220.85	29.390
				16	7.83	1854.61	24.543
				17	11.79	1798.52	23.801
				18	12.17	1751.23	23.175
				19	9.07	1716.04	22.709
				20	7.91	1069.36	14.151

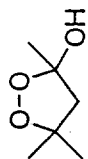




3-hydroxy-3,5,5-trimethyl-1,2-dioxolane

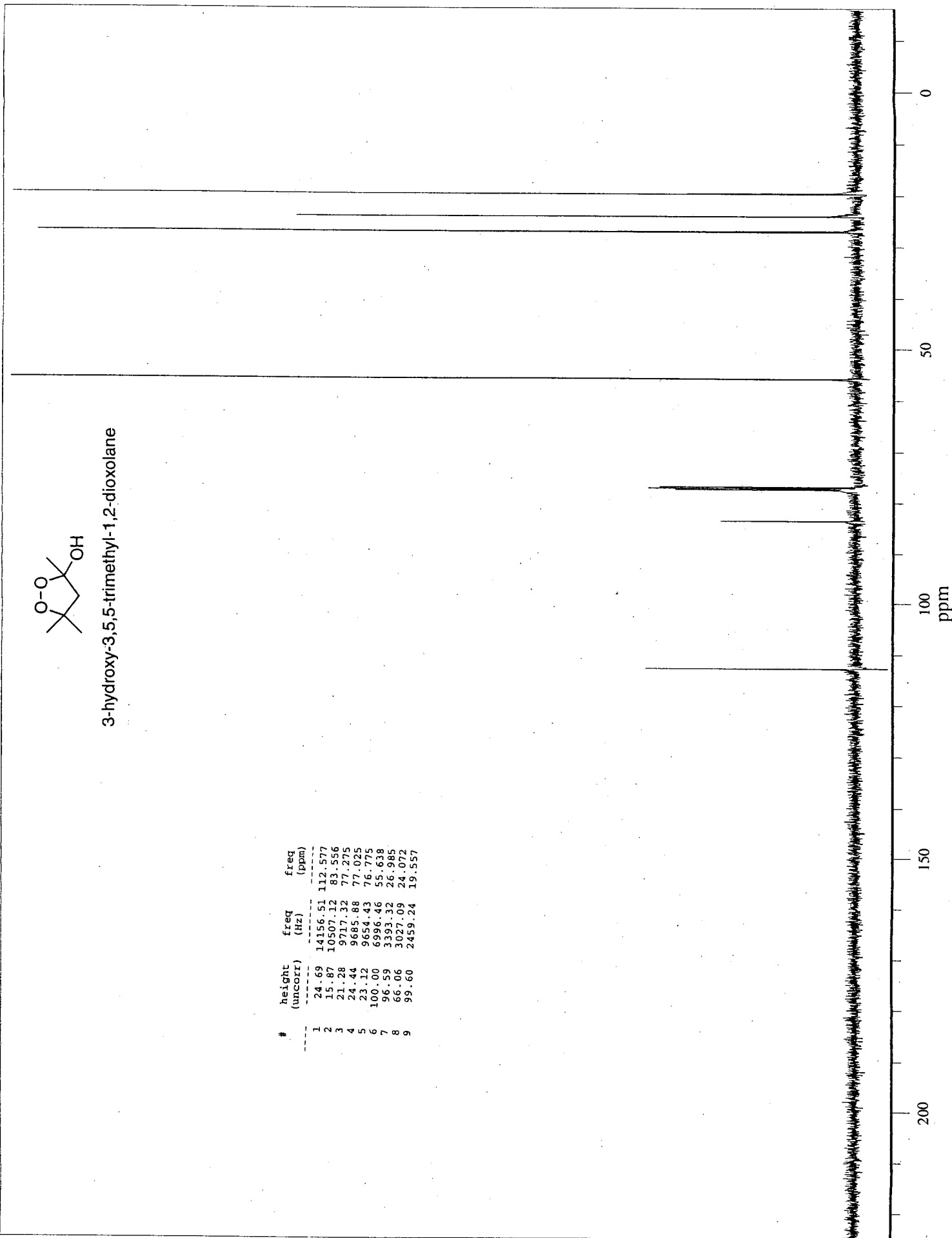
#	height (uncorr)	freq (Hz)	freq (ppm)
1	7.33	1201.74	2.403
2	24.87	1188.45	2.376
3	25.98	1179.18	2.358
4	7.20	1165.48	2.331
5	100.00	838.73	1.677
6	86.67	684.42	1.369
7	89.91	663.88	1.327

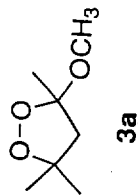




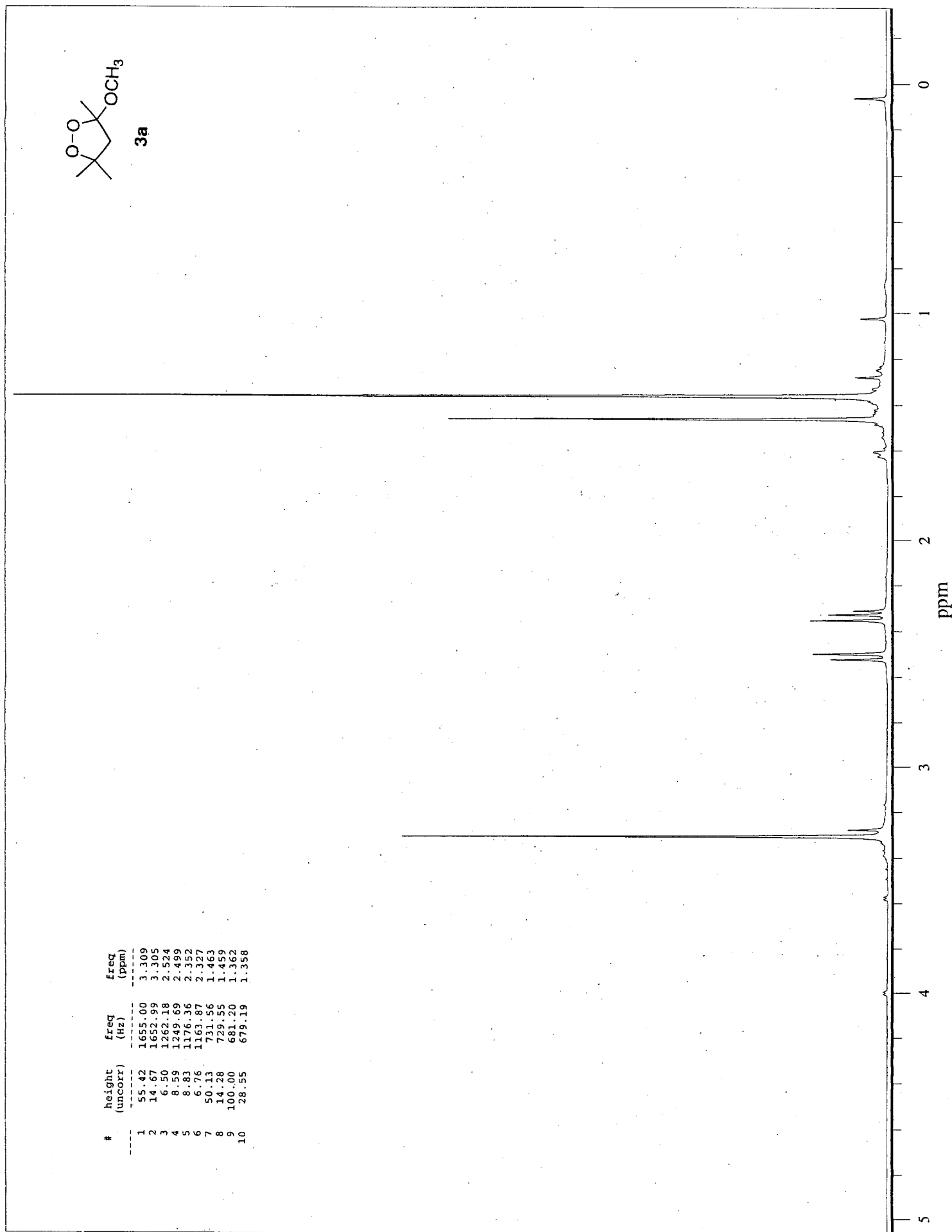
3-hydroxy-3,5,5-trimethyl-1,2-dioxolane

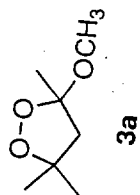
#	height (uncorr)	freq (Hz)	freq (ppm)
1	24.69	14156.51	112.577
2	15.87	10507.12	83.356
3	21.28	9717.32	77.275
4	24.44	9685.88	77.025
5	23.12	9654.43	76.775
6	100.00	6996.46	55.638
7	96.59	3393.32	26.985
8	66.06	3027.09	24.072
9	99.60	2459.24	19.557



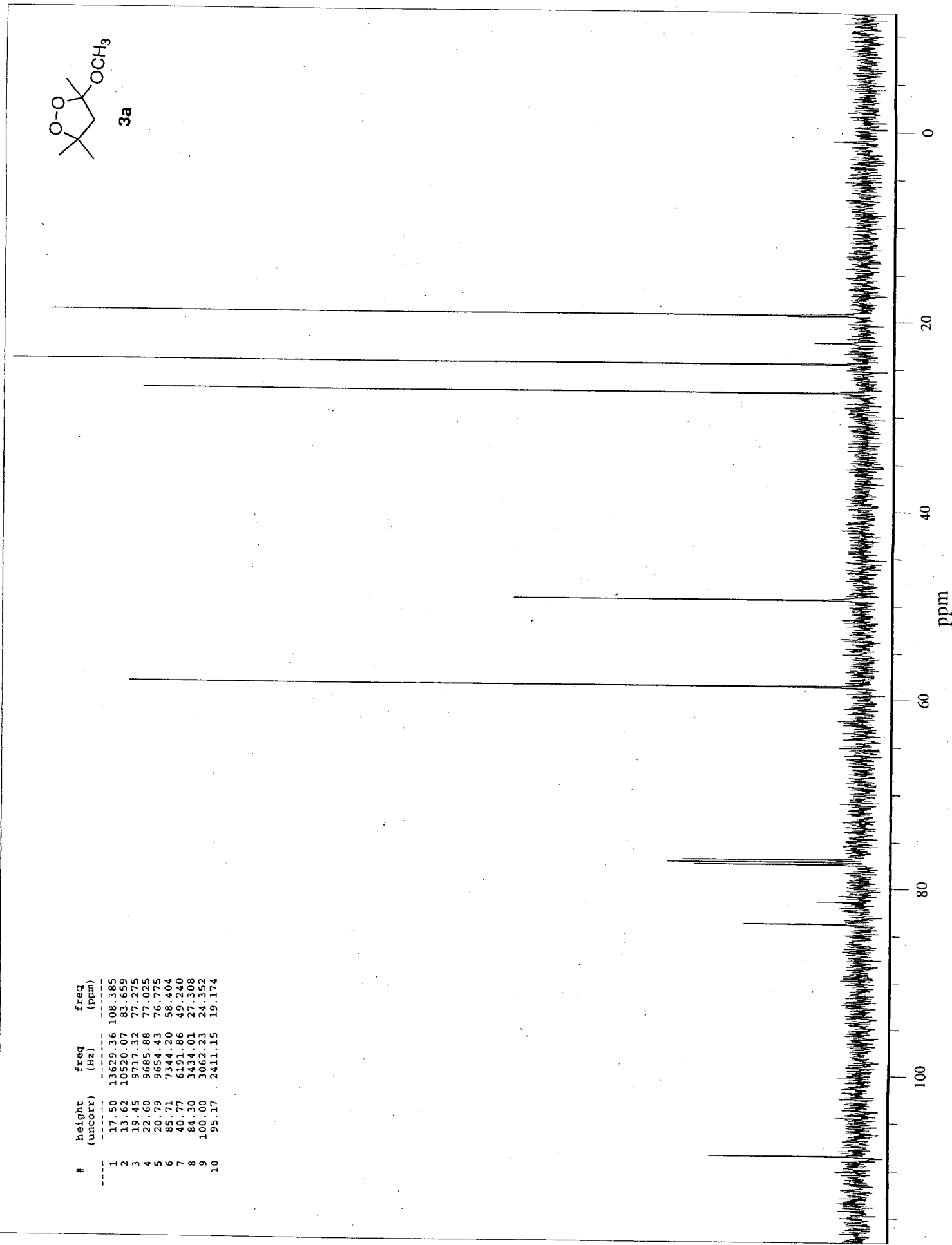


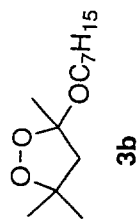
#	height (uncorr)	freq (Hz)	freq (ppm)
1	55.42	1655.00	3.309
2	14.67	1652.99	3.305
3	6.50	1262.18	2.524
4	8.59	1249.69	2.499
5	8.83	1176.36	2.352
6	6.76	1163.87	2.327
7	50.13	731.56	1.463
8	14.28	729.55	1.459
9	100.00	681.20	1.362
10	28.55	679.19	1.358





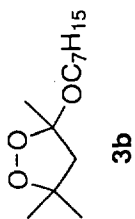
#	height (uncorr)	freq (Hz)	freq (ppm)
1	17.50	13629.36	108.385
2	13.62	10520.07	83.659
3	19.45	9717.32	77.275
4	22.60	9685.88	77.025
5	20.79	9654.43	76.775
6	85.71	7344.20	58.404
7	40.77	6131.86	49.240
8	84.30	3434.01	27.308
9	100.00	3062.23	24.352
10	95.17	2411.15	19.174



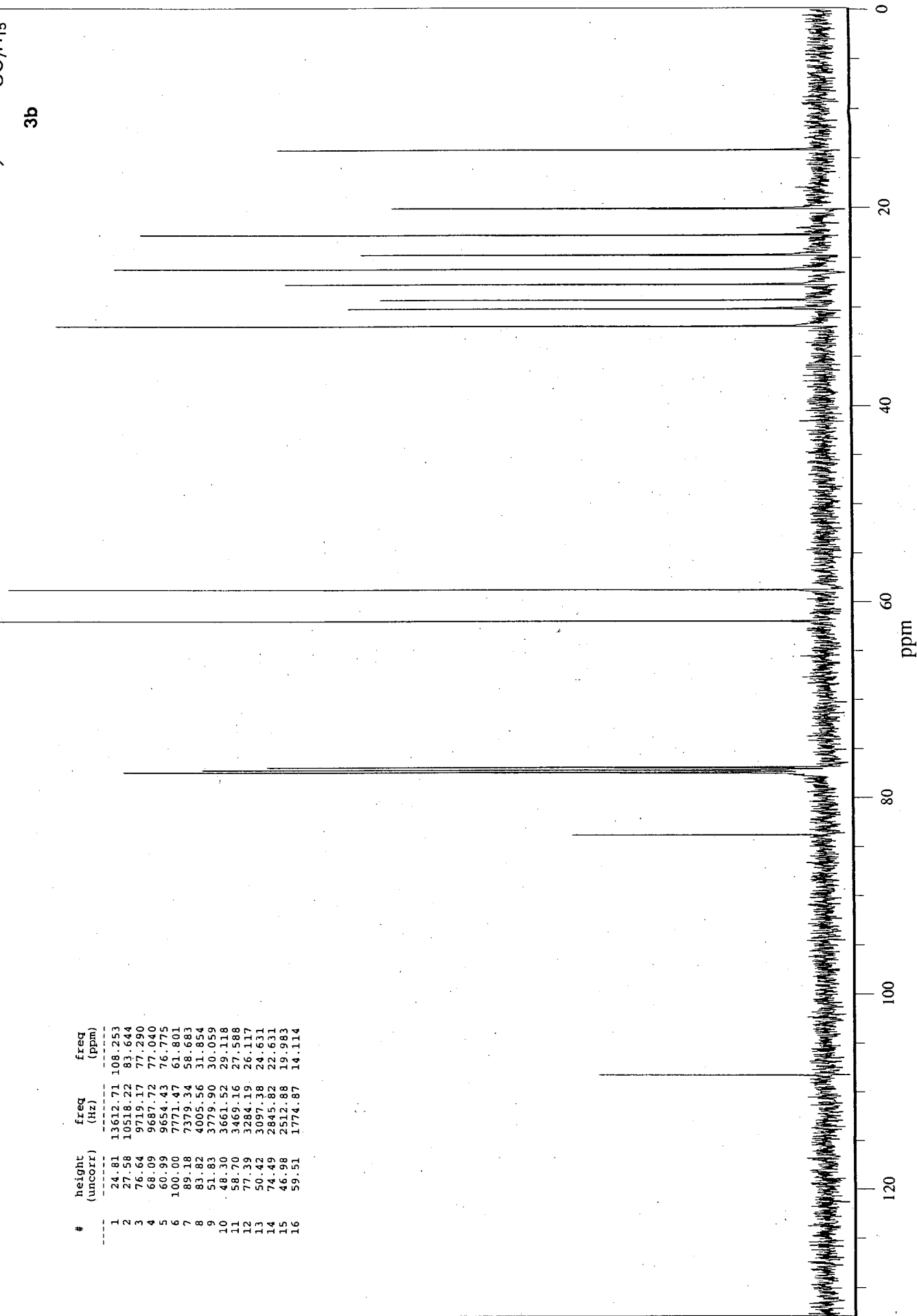


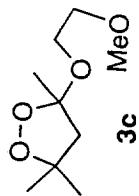
#	height (uncorr)	freq (Hz)	freq (ppm)
1	5.89	3631.61	7.262
2	8.32	1794.40	3.588
3	5.19	1792.39	3.584
4	5.00	1787.55	3.574
5	9.38	1785.14	3.570
6	4.71	1778.29	3.556
7	4.83	1723.90	3.447
8	9.64	1717.45	3.434
9	4.33	1715.03	3.429
10	5.33	1711.00	3.421
11	7.33	1708.18	3.416
12	4.04	1701.74	3.403
13	12.94	1267.41	2.534
14	16.14	1254.93	2.509
15	15.82	1163.87	2.327
16	12.77	1151.38	2.302
17	5.58	785.55	1.571
18	5.16	782.33	1.564
19	7.44	778.30	1.556
20	6.74	775.48	1.551
21	6.51	770.64	1.541
22	5.17	768.63	1.537
23	100.00	731.16	1.462
24	87.40	682.01	1.364
25	80.22	678.78	1.357
26	8.52	673.54	1.347
27	8.59	671.93	1.344
28	11.42	666.29	1.332
29	10.31	662.67	1.325
30	10.32	661.46	1.322
31	11.39	658.23	1.316
32	13.65	651.39	1.303
33	15.66	643.33	1.286
34	20.04	638.09	1.276
35	16.10	636.08	1.272
36	6.15	627.61	1.255
37	12.96	443.89	0.888
38	32.48	437.04	0.874
39	14.47	430.20	0.860

ppm

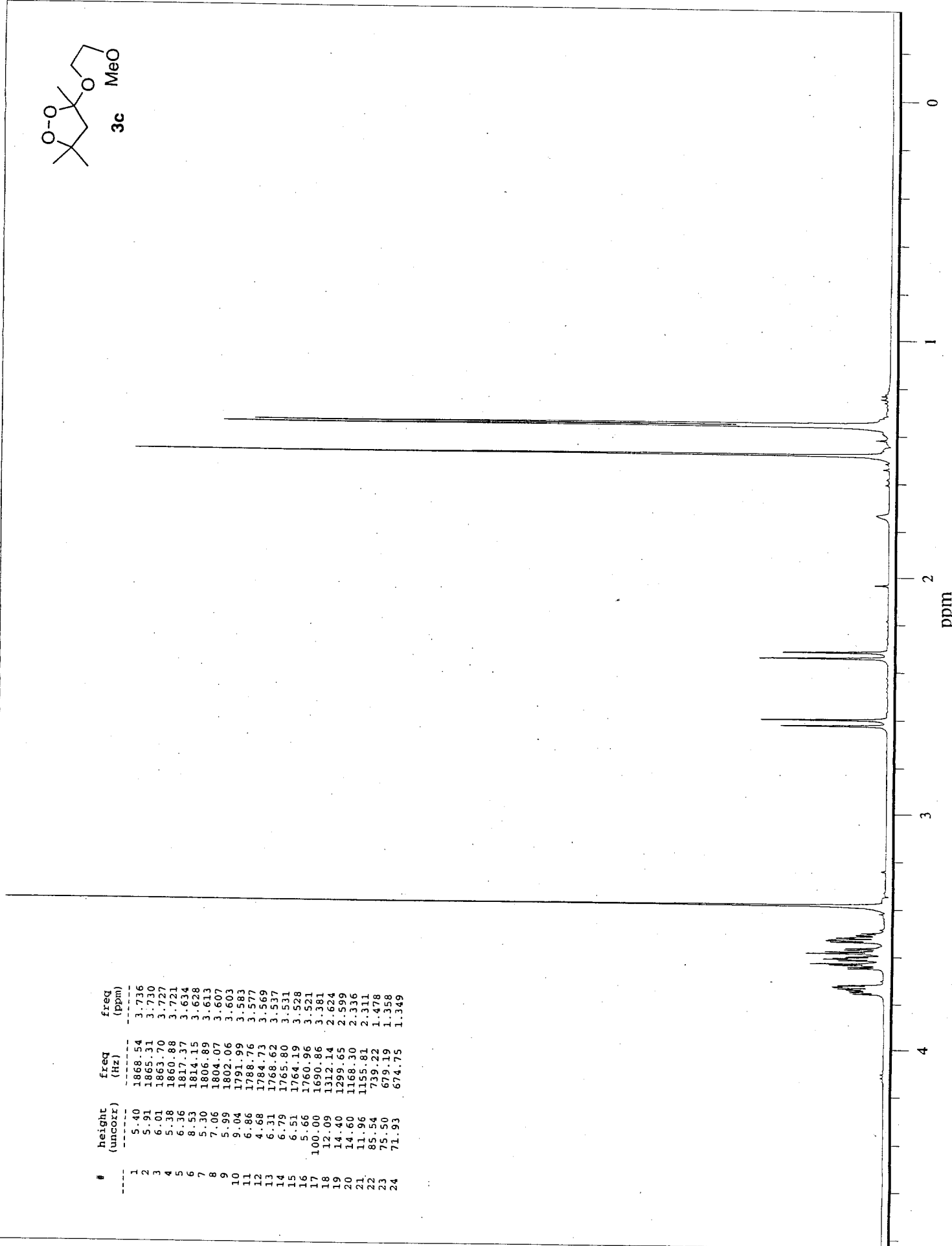


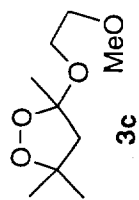
#	height (uncorr)	freq (Hz)	freq (ppm)
1	24.81	13612.71	108.253
2	27.58	10518.22	83.644
3	76.64	9719.17	77.290
4	68.09	9687.72	77.040
5	60.99	9654.43	76.775
6	100.00	7771.47	61.801
7	89.18	7379.34	58.683
8	83.82	4005.56	31.854
9	51.83	3779.90	30.059
10	48.30	3661.52	29.118
11	58.70	3469.16	27.588
12	77.39	3284.19	26.117
13	50.42	3097.38	24.631
14	74.49	2845.82	22.631
15	46.98	2512.88	19.983
16	59.51	1774.87	14.114



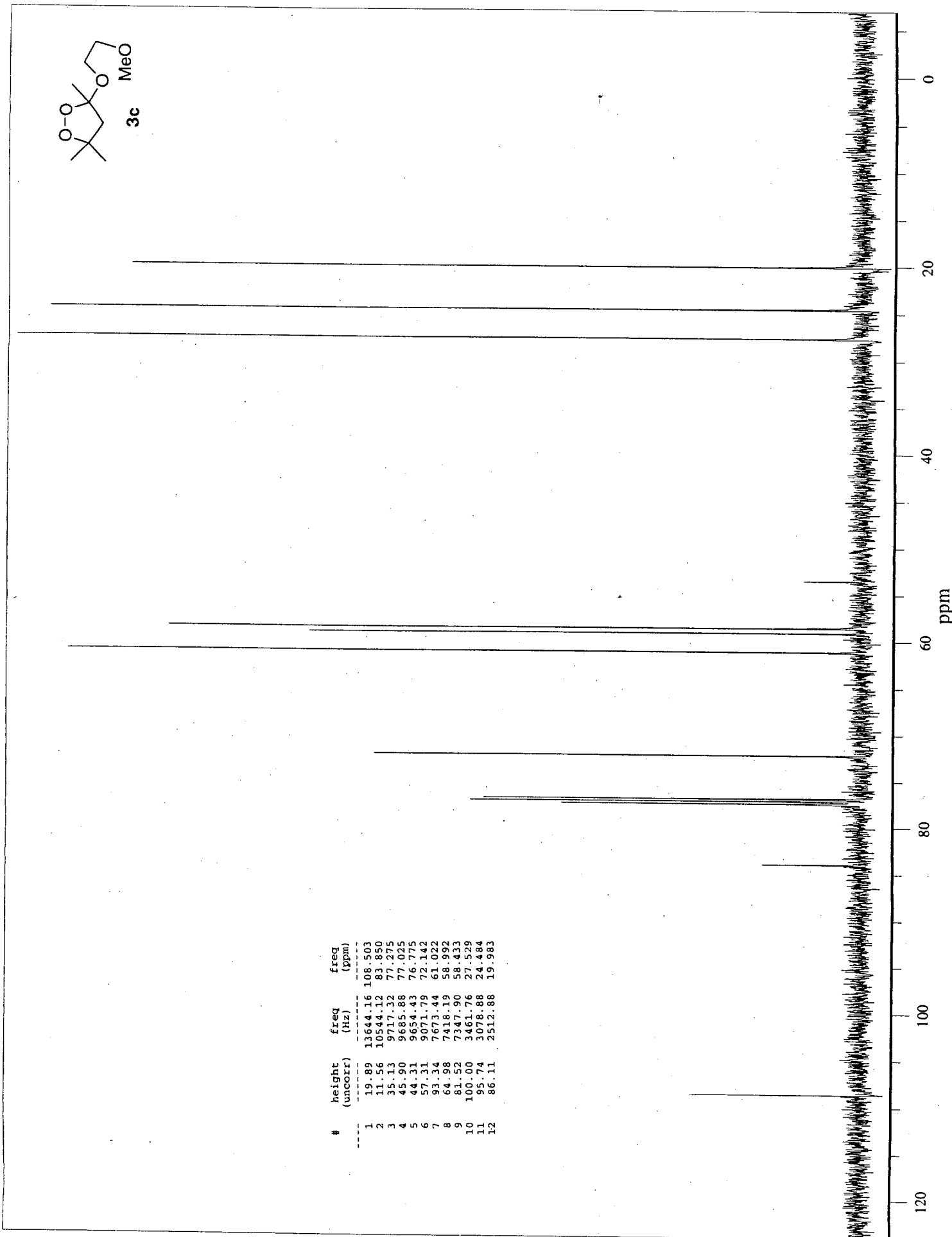


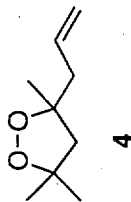
#	height (uncorr)	freq (Hz)	freq (ppm)
1	5.40	1868.54	3.736
2	5.91	1865.31	3.730
3	6.01	1863.70	3.727
4	5.38	1860.88	3.721
5	6.36	1817.37	3.634
6	8.53	1814.15	3.628
7	5.30	1806.89	3.628
8	7.06	1804.07	3.613
9	5.99	1802.06	3.607
10	9.04	1791.99	3.603
11	6.86	1788.76	3.583
12	4.68	1784.73	3.569
13	6.31	1768.62	3.537
14	6.79	1765.80	3.531
15	6.51	1764.19	3.528
16	5.66	1760.96	3.521
17	100.00	1690.86	3.381
18	12.09	1312.14	2.624
19	14.40	1299.65	2.599
20	14.60	1188.30	2.336
21	11.96	1155.81	2.311
22	85.54	739.22	1.478
23	75.50	679.19	1.358
24	71.93	674.75	1.349



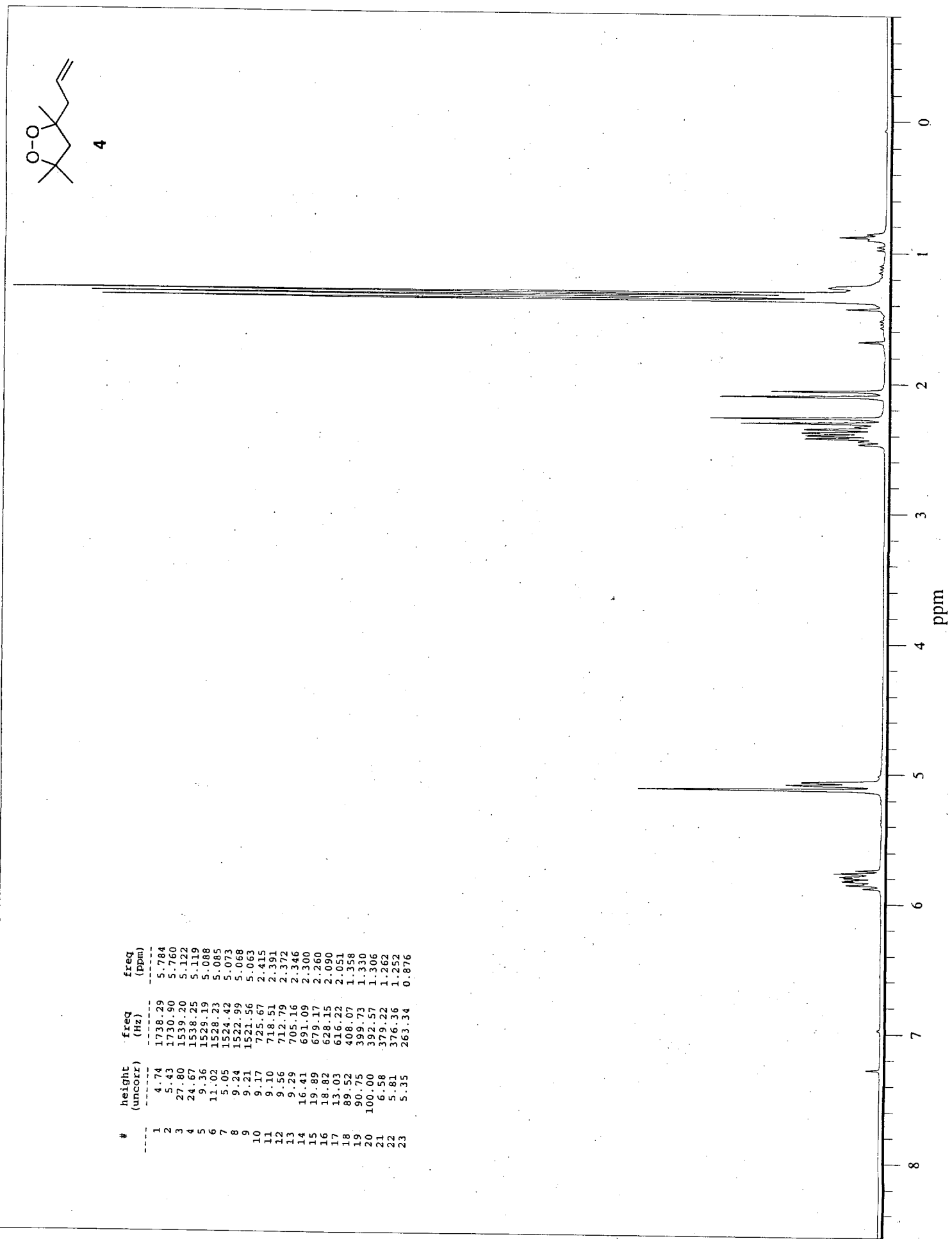


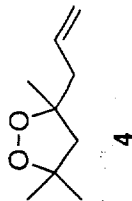
#	height (uncorr)	freq (Hz)	freq (ppm)
1	19.89	13644.16	108.503
2	11.56	10544.12	83.850
3	35.13	9717.32	77.275
4	45.90	9685.88	77.025
5	44.31	9654.43	76.775
6	57.31	9071.79	72.142
7	93.34	7673.44	61.022
8	64.98	7418.19	58.992
9	81.52	7347.90	58.433
10	100.00	3461.76	27.529
11	95.74	3078.88	24.484
12	86.11	2512.88	19.983



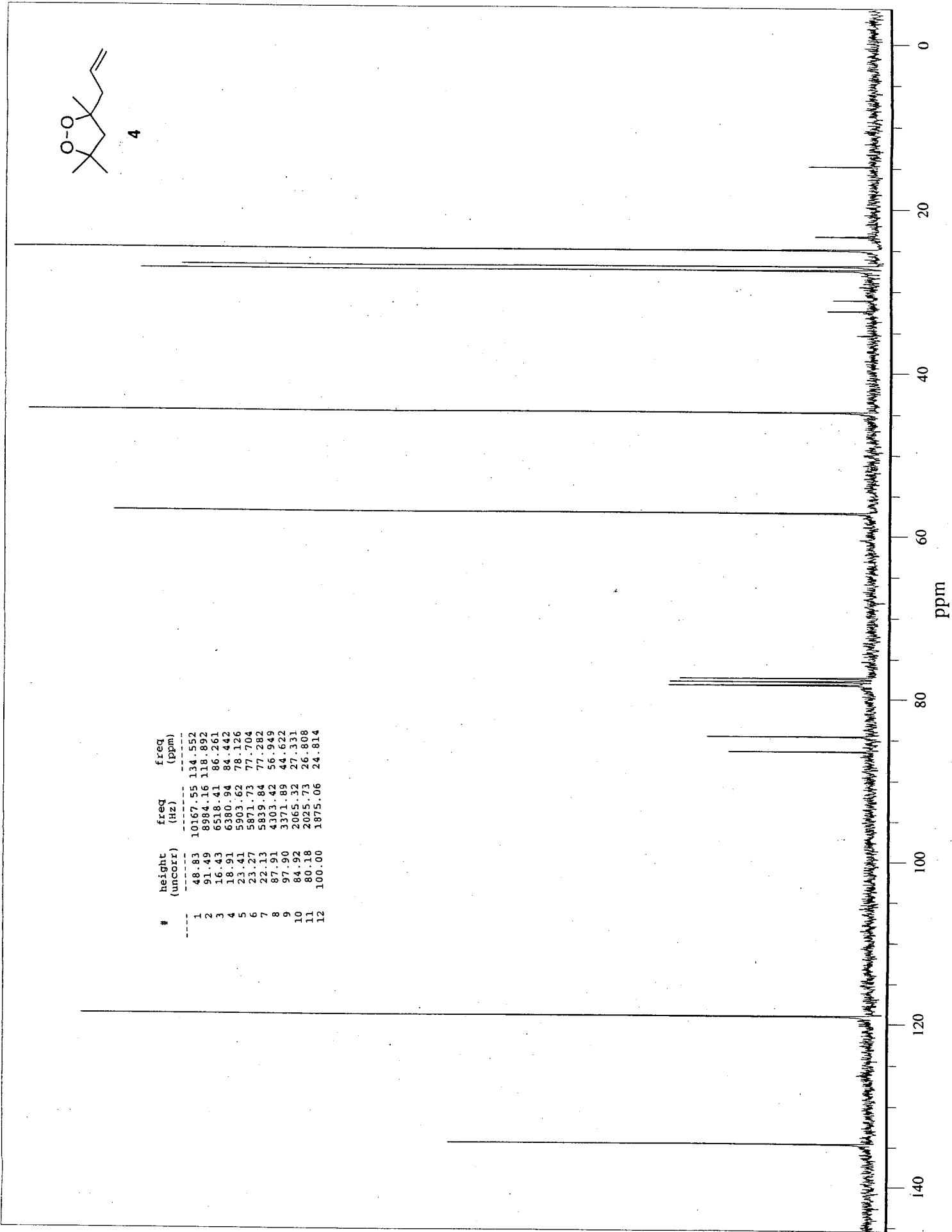


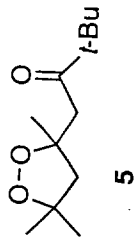
#	height (uncorr)	freq (Hz)	freq (ppm)
1	4.74	1738.29	5.784
2	5.43	1730.90	5.760
3	27.80	1539.20	5.122
4	24.67	1538.25	5.119
5	9.36	1529.19	5.088
6	11.02	1528.23	5.085
7	5.05	1524.42	5.073
8	9.24	1522.99	5.068
9	9.21	1521.56	5.063
10	9.17	725.67	2.415
11	9.10	718.51	2.391
12	9.56	712.79	2.372
13	9.29	705.16	2.346
14	16.41	691.09	2.300
15	19.89	679.17	2.260
16	18.82	628.15	2.090
17	13.03	616.22	2.051
18	89.52	408.07	1.358
19	90.75	399.73	1.330
20	100.00	392.57	1.306
21	6.58	379.22	1.262
22	5.81	376.36	1.252
23	5.35	263.34	0.876





#	height (uncorr)	freq (Hz)	freq (ppm)
1	48.83	10167.55	134.552
2	91.49	8984.16	118.892
3	16.43	6518.41	86.261
4	18.91	6380.94	84.442
5	23.41	5903.62	78.126
6	23.27	5871.73	77.704
7	22.13	5839.84	77.282
8	87.91	4303.42	56.949
9	97.90	3371.89	44.622
10	84.92	2065.32	27.331
11	80.18	2025.73	26.808
12	100.00	1875.06	24.814

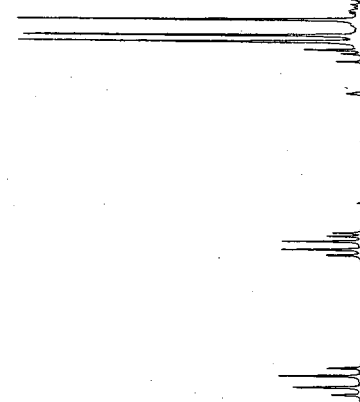


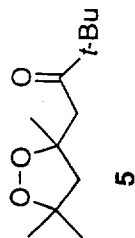


#	height (uncorr)	freq (Hz)	freq (ppm)
1	2.20	1499.48	2.998
2	5.06	1481.76	2.963
3	6.14	1457.18	2.914
4	2.53	1439.45	2.878
5	2.60	1182.00	2.364
6	5.96	1169.51	2.339
7	5.87	1150.57	2.301
8	2.60	1138.09	2.276
9	2.19	1130.03	2.260
10	2.01	735.99	1.472
11	4.33	709.81	1.419
12	25.20	591.68	1.383
13	24.85	677.97	1.355
14	25.29	642.12	1.284
15	2.30	574.84	1.149
16	2.09	571.61	1.143
17	100.00	564.76	1.129

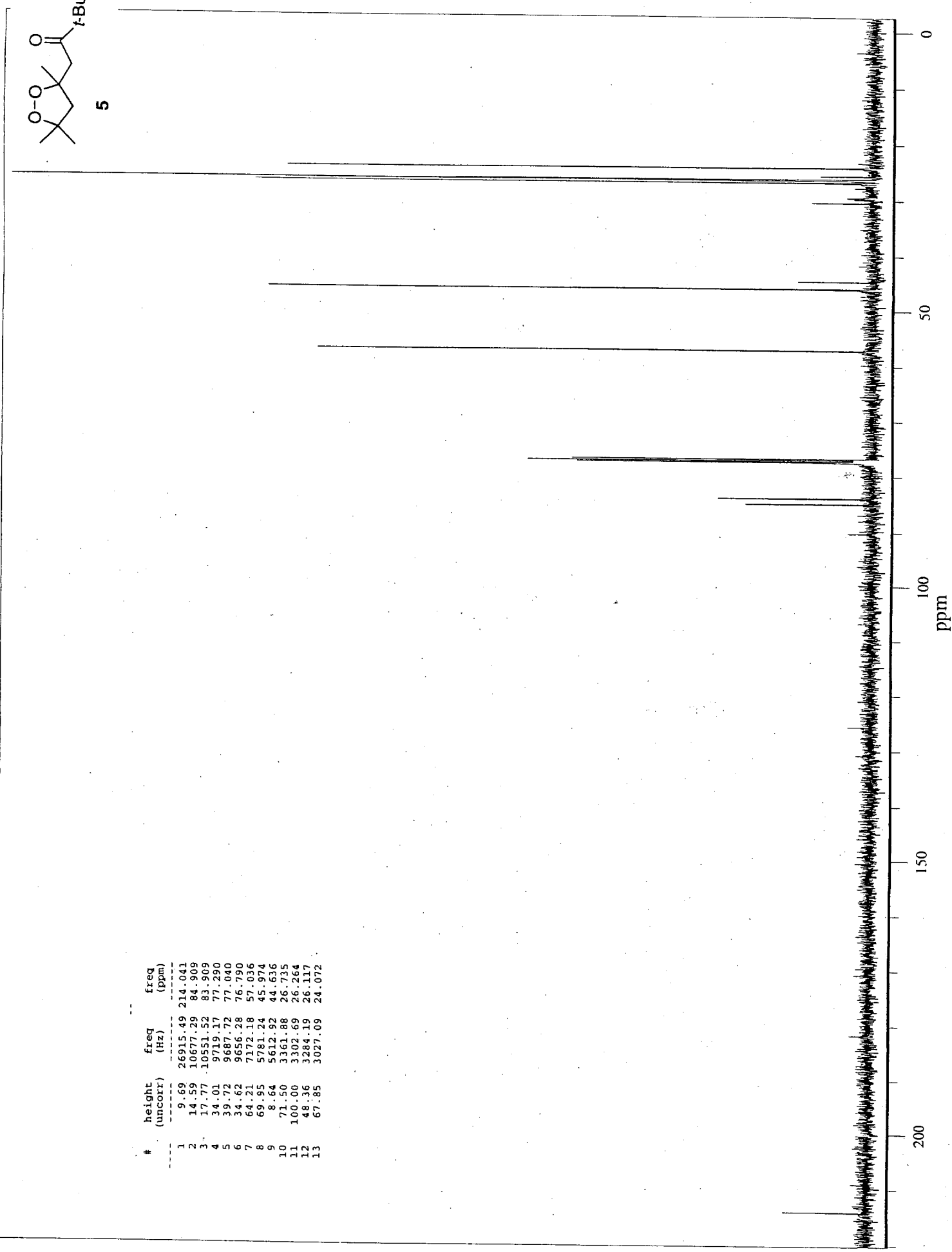
ppm

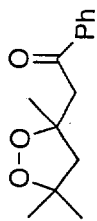
7 6 5 4 3 2 1 0





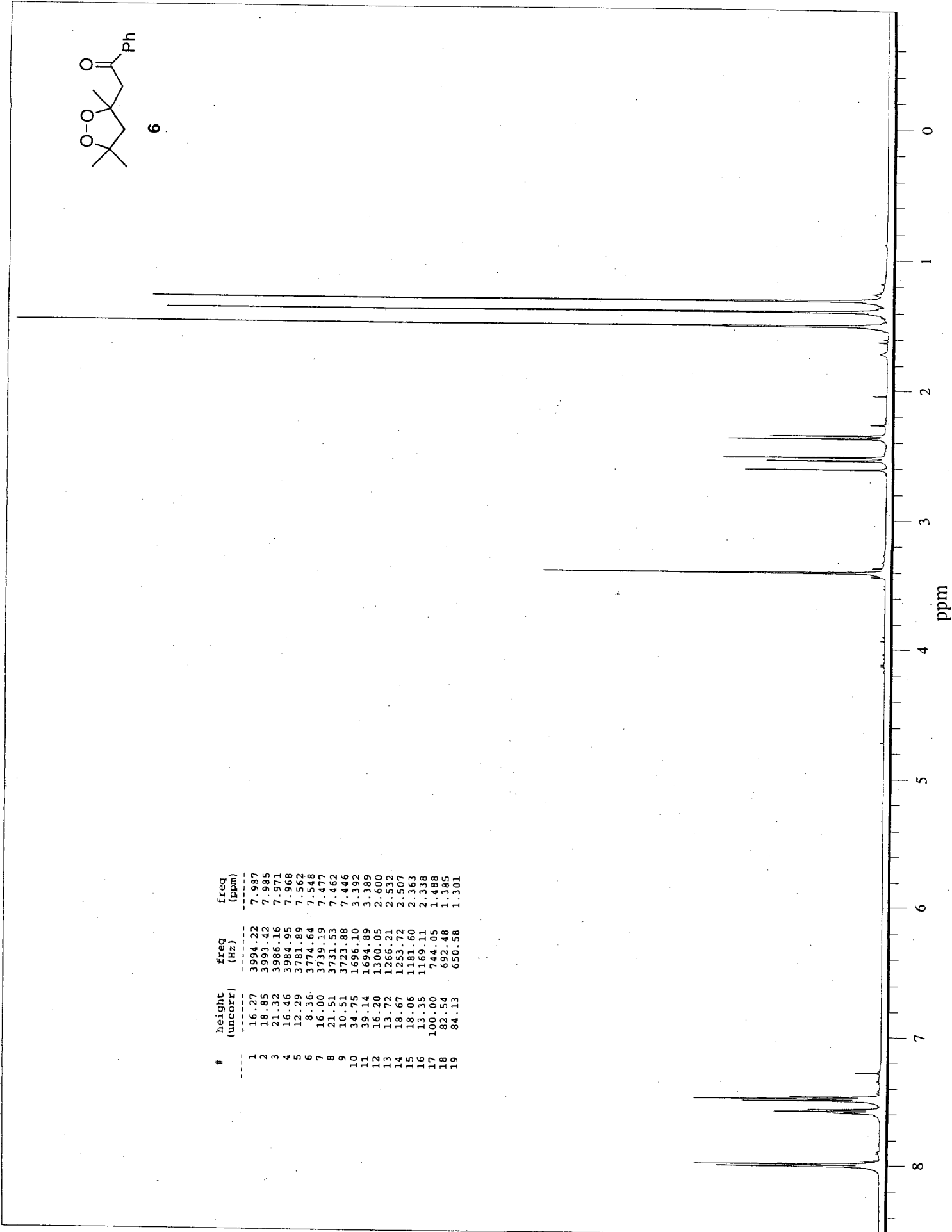
#	height (uncorr)	freq (Hz)	freq (ppm)
1	9.69	26915.49	214.041
2	14.59	10677.29	84.909
3	17.77	10551.52	83.909
4	34.01	9719.17	77.290
5	39.72	9687.72	77.040
6	34.62	9656.28	76.790
7	64.21	7172.18	57.036
8	69.95	5781.24	45.974
9	8.64	5612.82	44.636
10	71.50	3361.88	26.735
11	100.00	3302.69	26.264
12	48.36	3284.19	26.117
13	67.85	3027.09	24.072

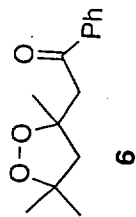




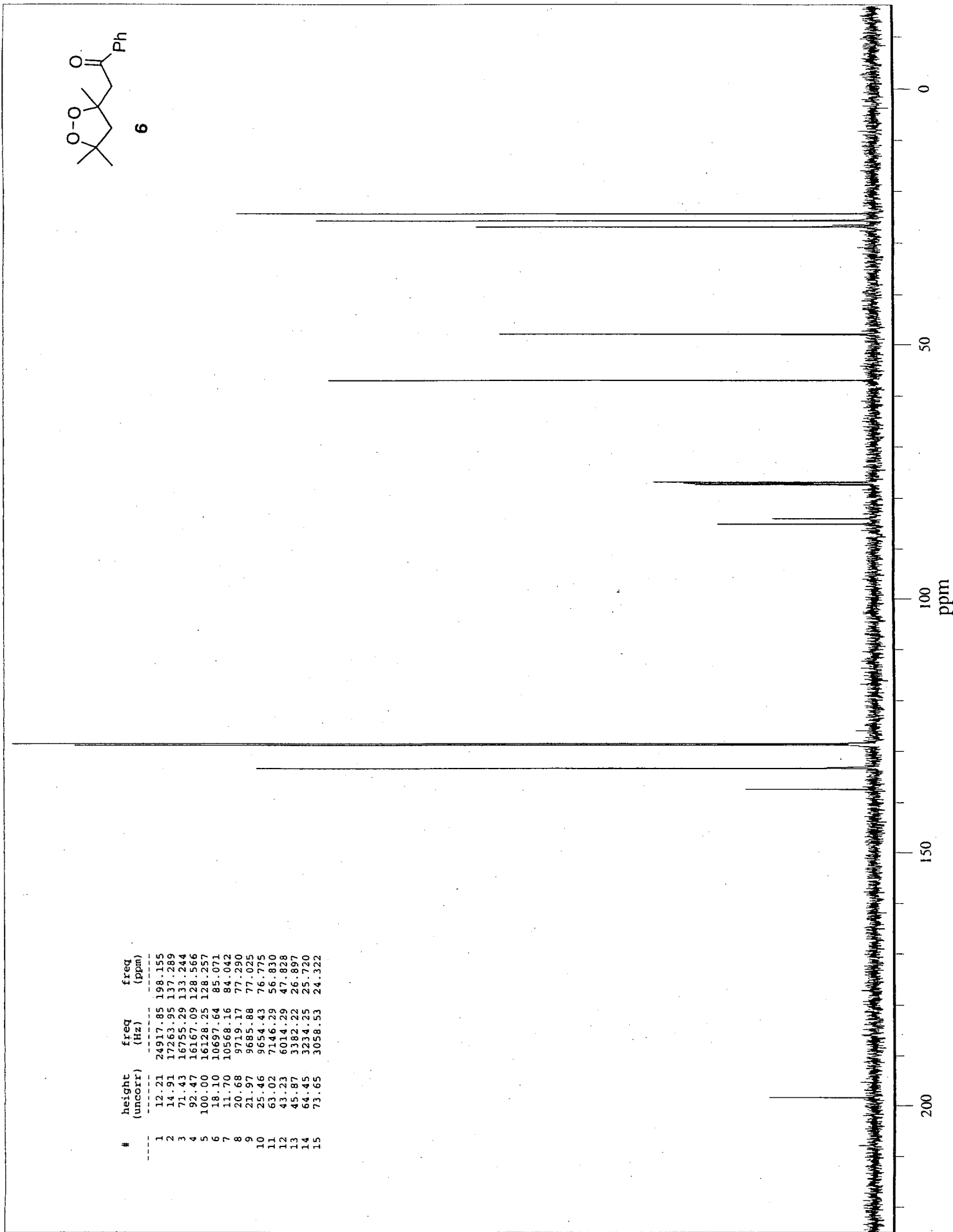
6

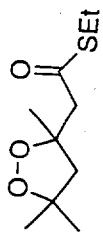
#	height (uncorr)	freq (Hz)	freq (ppm)
1	16.27	3994.22	7.987
2	18.85	3993.42	7.985
3	21.32	3986.16	7.971
4	16.46	3984.95	7.968
5	12.29	3781.89	7.562
6	8.36	3774.64	7.548
7	16.00	3739.19	7.477
8	21.51	3731.53	7.462
9	10.51	3723.88	7.446
10	34.75	1696.10	3.392
11	39.14	1694.89	3.389
12	16.20	1300.05	2.800
13	13.72	1266.21	2.932
14	18.67	1253.72	2.907
15	18.06	1181.60	2.363
16	13.35	1169.11	2.338
17	100.00	744.05	1.488
18	82.54	692.48	1.385
19	84.13	650.58	1.301





#	height (uncorr)	freq (Hz)	freq (ppm)
1	12.21	24917.85	198.155
2	14.91	17263.95	137.289
3	71.43	16785.20	133.244
4	92.47	16187.09	128.566
5	100.00	16128.25	128.257
6	18.10	10697.64	85.071
7	11.70	10568.16	84.042
8	20.68	9719.17	77.290
9	21.97	9685.88	77.025
10	25.46	9654.43	76.775
11	63.02	7146.29	56.830
12	43.23	6014.29	47.828
13	45.87	3382.22	26.897
14	64.45	3234.25	25.720
15	73.65	3058.53	24.322



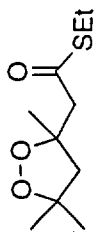


7

#	height (uncorr)	freq (Hz)	freq (ppm)
1	11.38	1491.43	2.982
2	18.38	1476.92	2.953
3	13.03	1442.68	2.885
4	39.85	1435.82	2.870
5	24.49	1432.20	2.864
6	37.10	1427.77	2.855
7	14.56	1420.52	2.840
8	13.67	1417.70	2.835
9	16.03	1280.71	2.561
10	17.33	1268.62	2.537
11	17.63	1079.26	2.158
12	15.34	1066.77	2.133
13	100.00	711.01	1.422
14	5.19	680.80	1.361
15	94.25	674.75	1.349
16	95.77	663.07	1.325
17	35.02	626.00	1.252
18	85.49	618.35	1.236
19	36.49	611.10	1.222

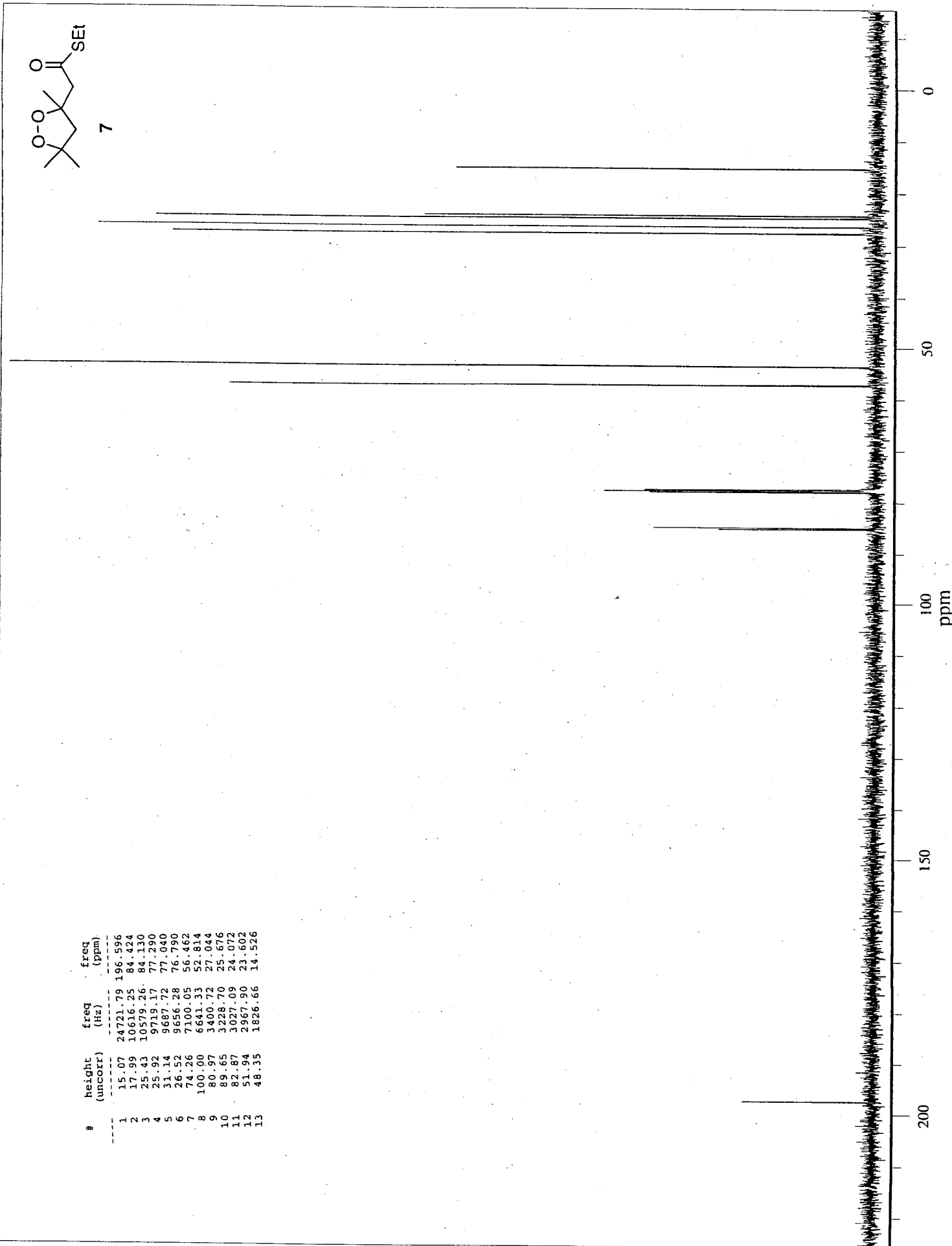
7

ppm



7

#	height (uncorr)	freq (Hz)	freq (ppm)
1	15.07	24721.79	196.596
2	17.99	10616.25	84.424
3	25.43	10579.26	84.130
4	25.92	9719.17	77.290
5	31.14	9687.72	77.040
6	26.52	9656.28	76.790
7	74.26	7100.05	56.462
8	100.00	6641.33	52.814
9	80.97	3400.72	27.044
10	89.65	3228.70	25.676
11	82.87	3027.09	24.072
12	51.94	2967.90	23.602
13	48.35	1826.66	14.526



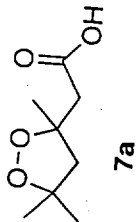
0

50

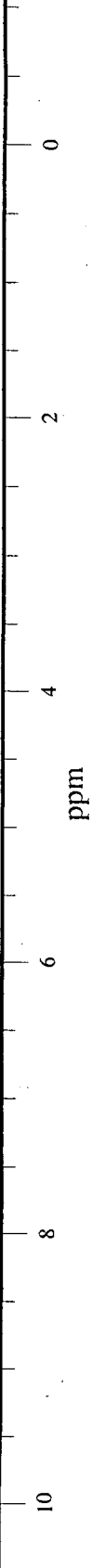
100
ppm

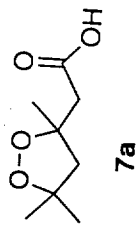
150

200

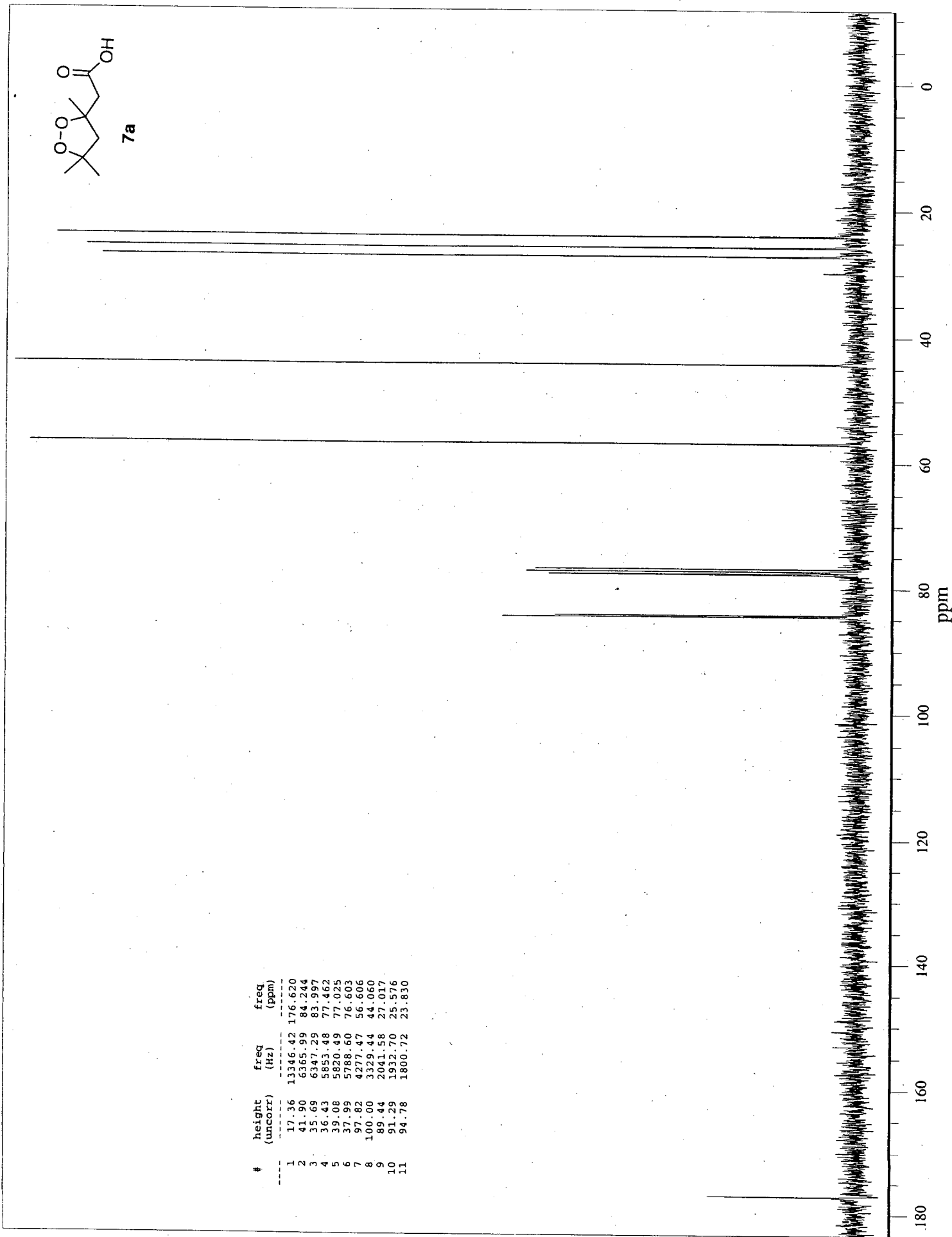


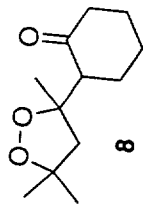
#	height (uncorr.)	freq (Hz)	freq (ppm)
1	9.22	2971.71	9.889
2	10.26	853.70	2.841
3	23.40	838.92	2.792
4	24.76	817.22	2.719
5	10.91	802.44	2.670
6	15.29	766.91	2.552
7	19.67	754.52	2.511
8	19.22	673.45	2.241
9	14.93	661.05	2.200
10	99.86	443.84	1.477
11	99.50	413.80	1.377
12	100.00	403.54	1.343





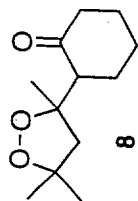
#	height (uncorr)	freq (Hz)	freq (ppm)
1	17.36	13346.42	176.620
2	41.90	6365.99	84.244
3	35.69	6347.29	83.997
4	36.43	5853.48	77.462
5	39.08	5820.49	77.025
6	37.99	5788.60	76.603
7	97.82	4277.47	56.606
8	100.00	3329.44	44.060
9	89.44	2041.58	27.017
10	91.29	1932.70	25.576
11	94.78	1800.72	23.830



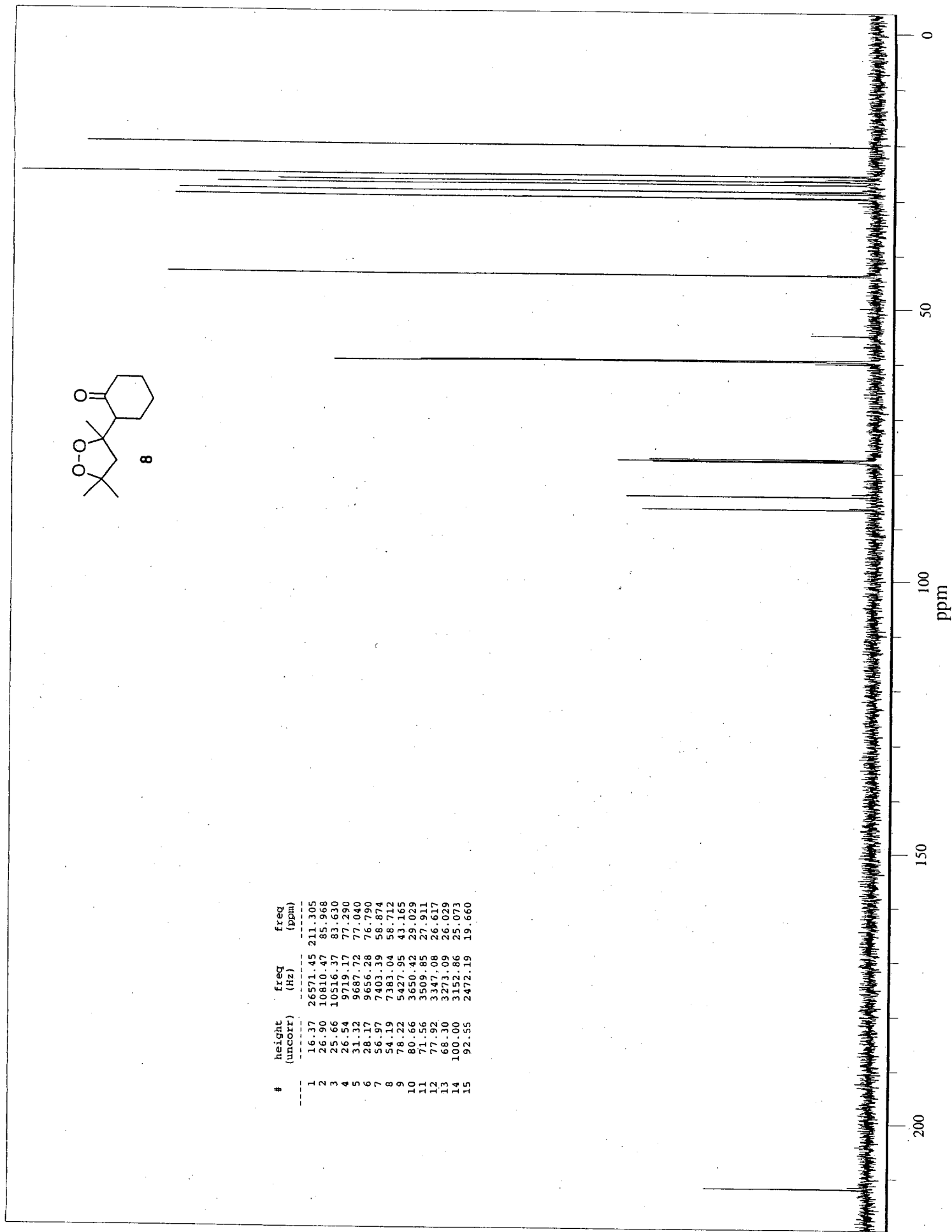


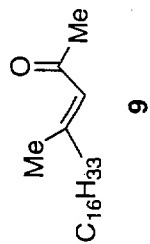
#	height (uncorr)	freq (Hz)	freq (ppm)
1	5.07	1410.04	2.820
2	5.27	1405.21	2.810
3	5.31	1397.15	2.794
4	5.16	1392.31	2.784
5	14.75	1203.35	2.406
6	18.28	1190.46	2.380
7	3.82	1176.76	2.353
8	6.19	1165.88	2.331
9	8.98	1163.06	2.325
10	9.65	1161.05	2.322
11	7.61	1158.63	2.317
12	8.38	1155.81	2.311
13	5.44	1152.99	2.306
14	6.81	1150.17	2.300
15	7.86	1148.56	2.297
16	7.08	1146.14	2.292
17	9.21	1142.92	2.285
18	4.90	1140.10	2.280
19	5.27	1136.88	2.273
20	17.18	1085.71	2.171
21	13.71	1072.82	2.145
22	4.70	1037.36	2.074
23	4.49	1034.14	2.068
24	3.84	1031.32	2.062
25	4.19	1027.69	2.055
26	3.76	1024.87	2.049
27	3.88	950.34	1.900
28	4.36	948.32	1.896
29	4.83	947.11	1.894
30	4.46	945.50	1.891
31	4.35	841.15	1.682
32	5.58	831.08	1.662
33	7.91	828.26	1.656
34	3.73	822.62	1.645
35	7.34	817.78	1.635
36	4.34	812.95	1.626
37	4.67	758.15	1.516
38	6.22	754.53	1.509
39	3.88	745.26	1.490
40	4.77	742.04	1.484
41	10.67	700.14	1.400
42	12.92	672.74	1.345
43	80.61	667.50	1.335
44	100.00	656.22	1.312
45	84.84	623.18	1.246
46	10.74	617.54	1.235



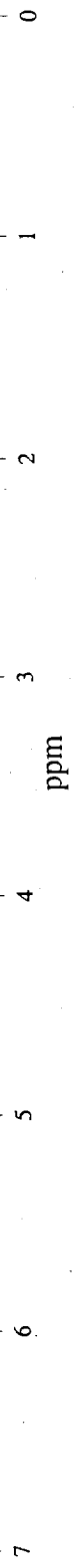


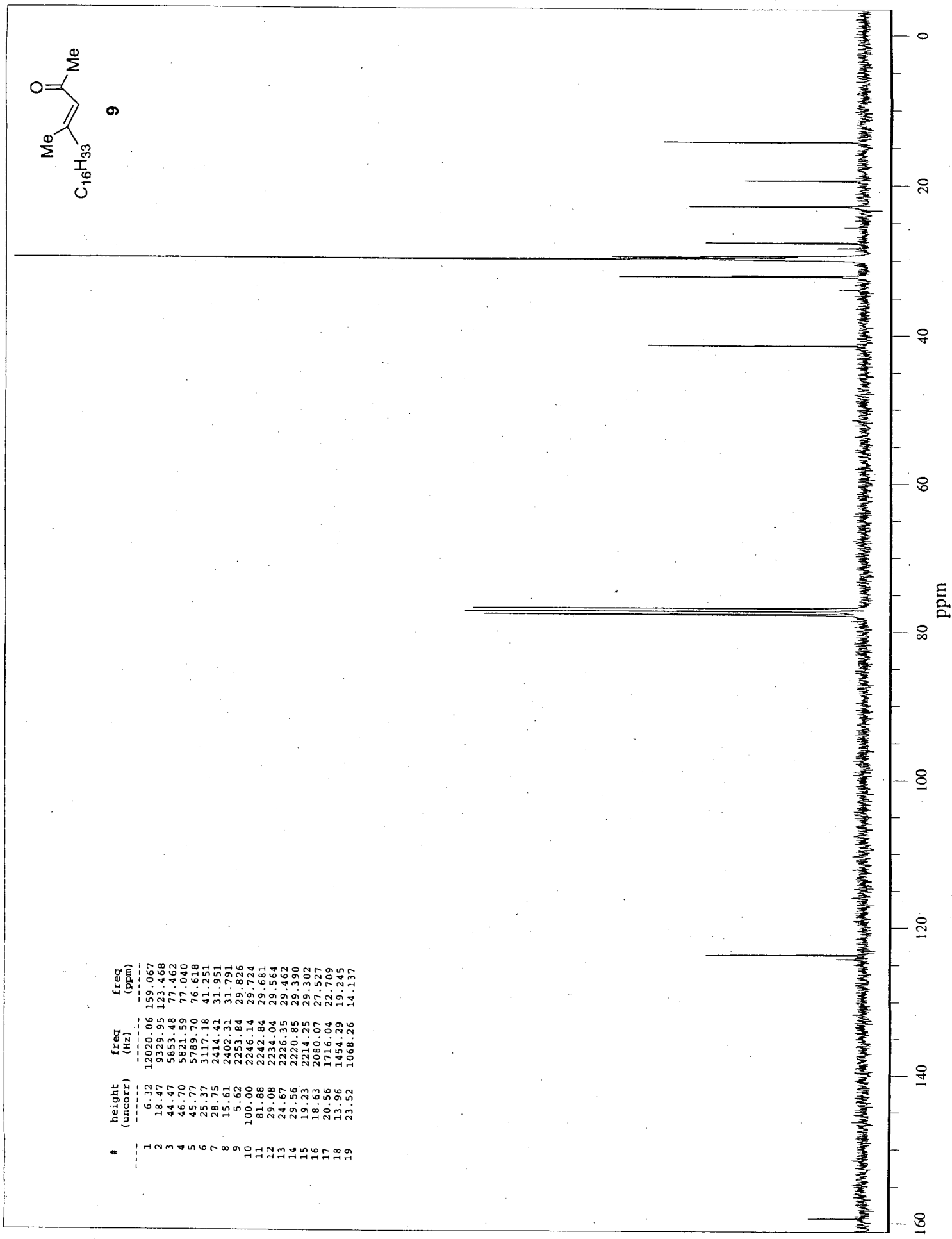
#	height (uncorr)	freq (Hz)	freq (ppm)
1	16.37	26571.45	211.305
2	26.90	10810.47	85.968
3	25.66	10516.37	83.630
4	26.54	9719.17	77.290
5	31.32	9687.72	77.040
6	28.17	9656.28	76.790
7	56.97	7403.39	58.874
8	54.19	7383.04	58.712
9	78.22	5427.95	43.165
10	80.66	3650.42	29.029
11	71.56	3509.85	27.911
12	77.52	3347.08	26.617
13	68.30	3273.09	26.029
14	100.00	3152.86	25.073
15	92.55	2472.19	19.660

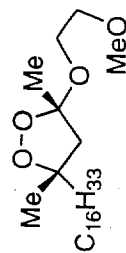




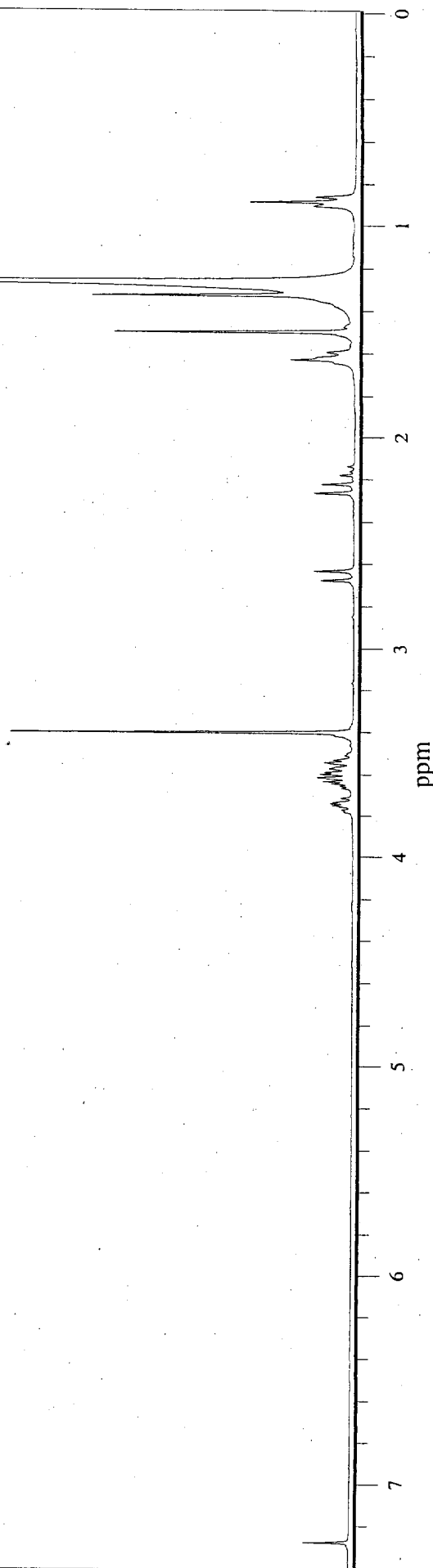
#	height (uncorr)	freq (Hz)	freq (ppm)
1	3.46	1822.22	6.064
2	3.44	1821.50	6.061
3	22.67	652.71	2.172
4	3.58	646.27	2.150
5	4.16	639.59	2.128
6	14.84	636.49	2.118
7	15.12	635.54	2.115
8	100.00	377.79	1.257
9	4.29	270.74	0.901
10	9.96	264.30	0.879
11	3.76	257.38	0.856

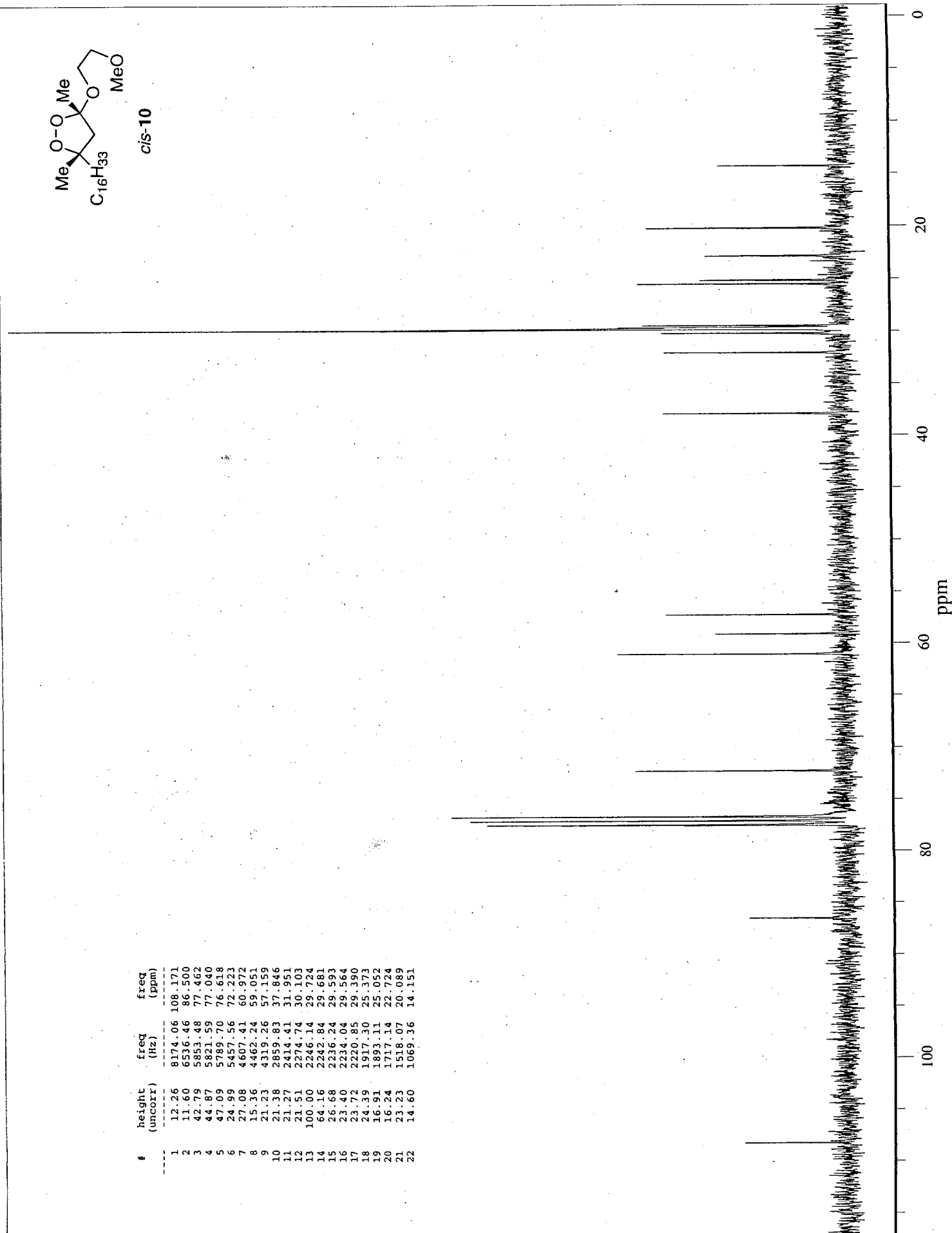


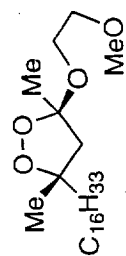




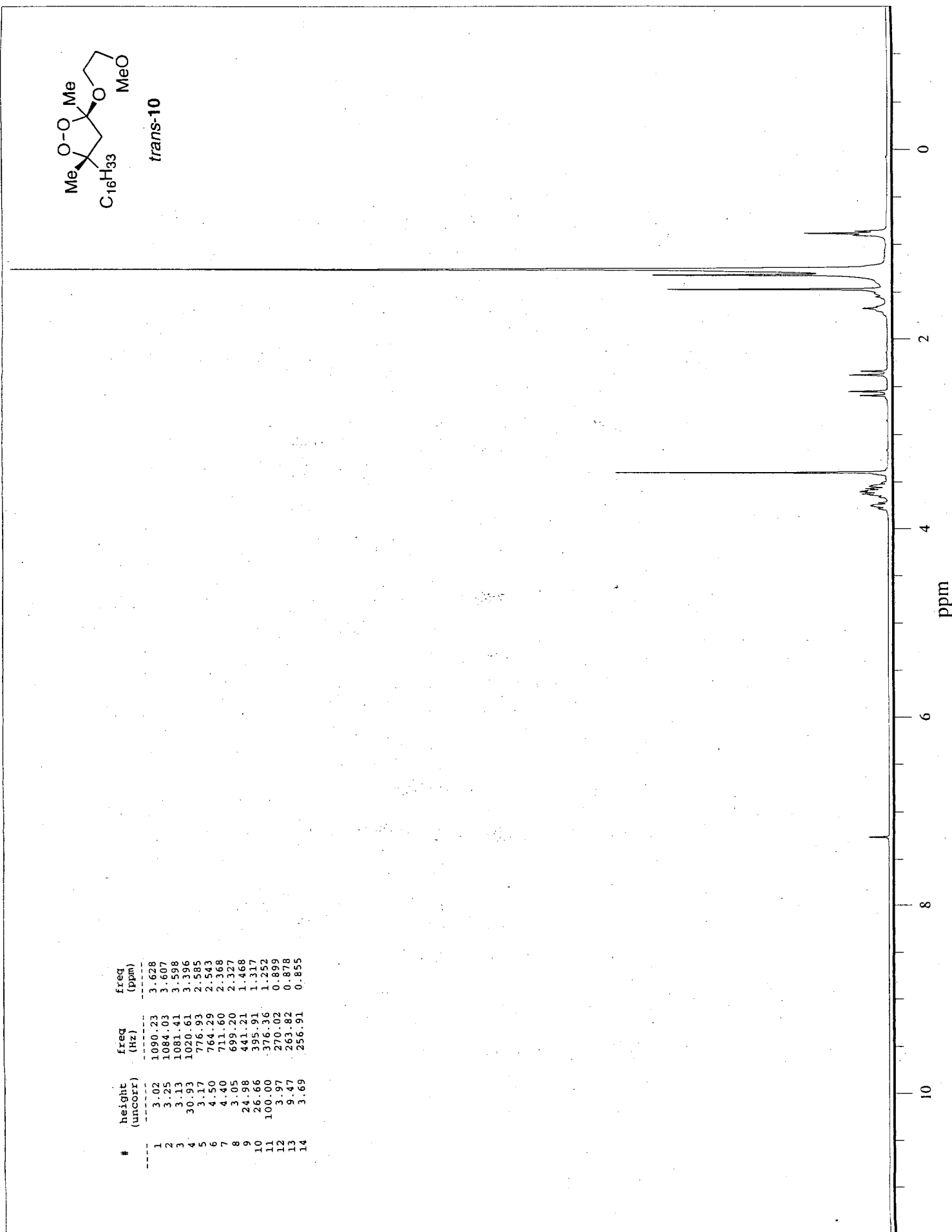
#	height (uncorr)	freq (Hz)	freq (ppm)
1	3.24	1084.75	3.610
2	2.96	1079.88	3.594
3	30.67	1020.85	3.397
4	3.00	802.68	2.671
5	3.81	790.04	2.629
6	3.64	679.17	2.260
7	3.00	666.53	2.218
8	5.82	488.90	1.627
9	3.56	486.04	1.617
10	21.53	449.08	1.494
11	23.50	397.10	1.321
12	100.00	377.08	1.255
13	3.82	270.97	1.255
14	9.54	264.54	0.902
15	3.68	257.62	0.880

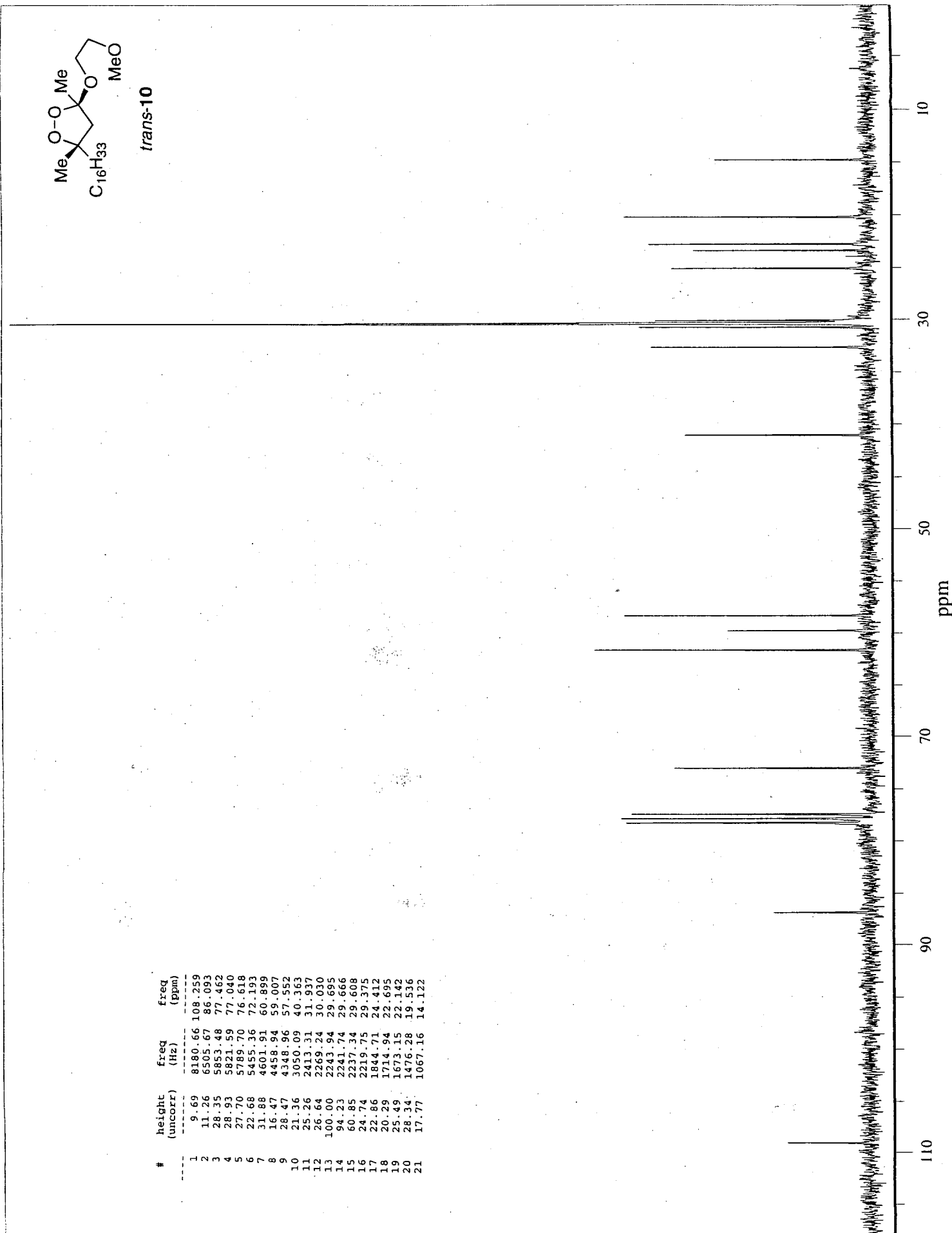


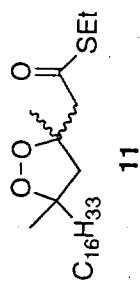




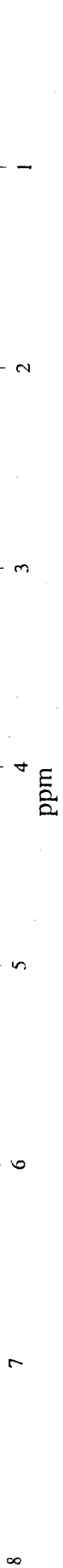
#	height (uncorr)	freq (Hz)	freq (ppm)
1	3.02	1090.23	3.628
2	3.25	1084.03	3.607
3	3.13	1081.41	3.598
4	30.93	1020.61	3.396
5	3.17	776.93	2.585
6	4.50	764.29	2.543
7	4.40	711.60	2.368
8	3.05	699.20	2.327
9	24.98	441.21	1.468
10	26.66	395.91	1.317
11	100.00	376.36	1.252
12	3.97	270.02	0.899
13	9.47	263.82	0.878
14	3.69	256.91	0.855

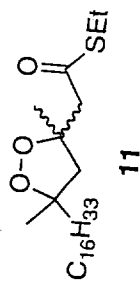






#	height (uncorr)	freq (Hz)	freq (ppm)	#	height (uncorr)	freq (Hz)	freq (ppm)
1	1.39	804.49	3.010	1	3.63	484.37	1.612
2	1.14	890.18	2.962	2	7.32	434.54	1.446
3	1.62	877.31	2.919	3	7.87	427.86	1.424
4	5.31	869.92	2.895	4	10.80	397.82	1.374
5	2.32	864.43	2.876	5	18.42	387.57	1.280
6	5.13	862.29	2.869	6	19.14	384.94	1.261
7	1.18	857.04	2.852	7	100.00	377.31	1.256
8	1.90	854.90	2.845	8	10.80	370.16	1.212
9	1.04	781.22	2.600	9	3.57	363.49	1.210
10	1.20	768.82	2.558	10	3.91	270.74	0.901
11	1.09	754.75	2.511	11	9.46	264.54	0.880
12	1.44	742.36	2.470	12	4.06	257.38	0.856
13	1.38	663.43	2.208				
14	1.06	651.04	2.166				
15	1.23	629.58	2.095				
16	1.15	617.18	2.054				
17	1.56	614.79	2.046				





#	height (uncorr)	freq (Hz)	freq (ppm)
1	3.21	14870.74	196.792
2	3.00	14864.14	196.705
3	4.54	6557.36	86.777
4	5.22	6541.96	86.573
5	5.97	6363.79	84.215
6	5.83	6356.09	84.113
7	31.47	5853.48	77.462
8	31.54	5821.59	77.040
9	30.25	5789.70	76.618
10	10.73	4181.79	55.340
11	9.36	4164.19	55.107
12	8.11	4000.32	52.938
13	9.21	3983.82	52.720
14	11.81	3006.10	39.781
15	9.56	2932.42	38.806
16	17.97	2414.41	31.951
17	14.82	2271.44	30.059
18	100.00	2245.04	29.710
19	74.15	2242.84	29.681
20	32.90	2236.24	29.593
21	12.45	2231.84	29.535
22	24.34	2219.75	29.375
23	9.30	1882.11	24.907
24	9.61	1874.41	24.805
25	9.23	1856.81	24.572
26	8.65	1822.72	24.121
27	8.67	1816.12	24.034
28	8.06	1787.53	23.655
29	7.92	1785.33	23.626
30	9.04	1760.03	23.291
31	22.55	1716.04	22.709
32	9.70	1101.25	14.573
33	17.37	1068.26	14.137

